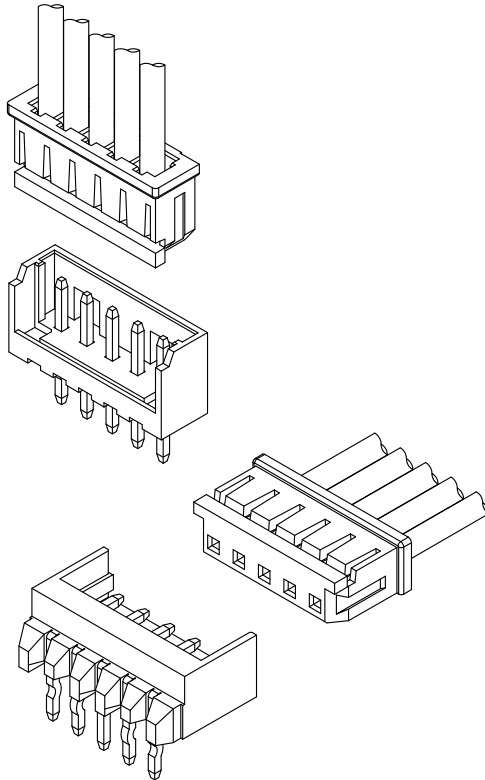


A2014 51065 CONNECTOR

2.00mm Pitch/Disconnectable Crimp style connectors



- Secure locking structure
- Low insertion force
- Suction area for picking up
- Improvement of engagement with prying

Specifications:

- Current rating: 2.0 A / AC,DC (AWG #24)
- Voltage rating: 125 V AC/DC
- Temperature range: -40°C ~ +105°C
(including temperature rise in applying electrical current)
- Contact resistance: Initial value/ 30m Ω max
Insulation resistance: 1000 M Ω min
Withstanding voltage: 800 VAC/minute
Applicable wire: Conductor size/ AWG#28~#24
Insulation O.D./ 0.80 to 1.40 mm
- * Compliant with RoHS2/ HF/ REACH
- * Refer to "General Instruction and Notice when using Terminals and Connectors"
- * Contact CSG for details

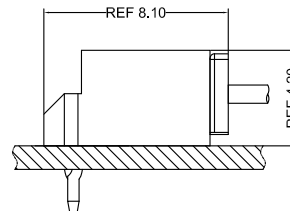
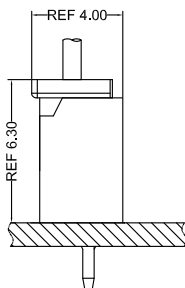
Material:

Housing: PA66/UL94-V0;Color:White

Terminal: Phosphor/ Tin-plated

DIP Wafer Housing: PA66,UL94-V0;Color:White

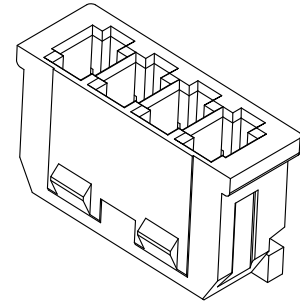
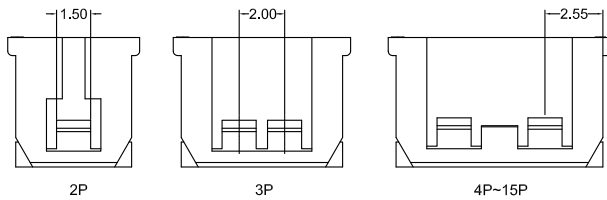
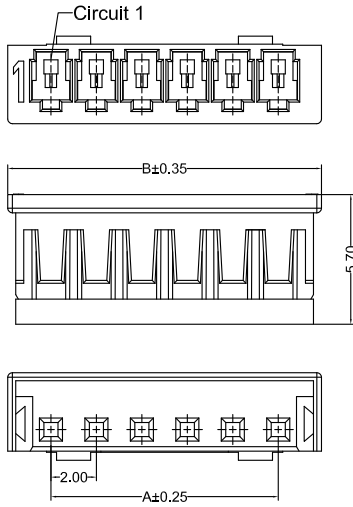
DIP Wafer Pin: Brass/ Tin-plated



- Note: 1. The above figure is the figure viewed from the connector mounting side.
2. Tolerances are non-cumulative: ± 0.08 mm for all centers.
3. The dimensions above should serve as a guideline. Contact CSG for details.

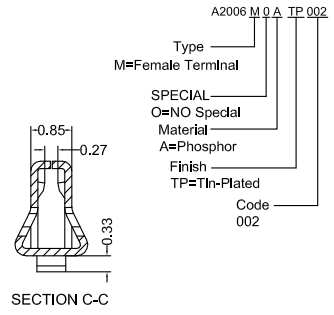
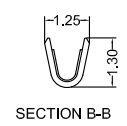
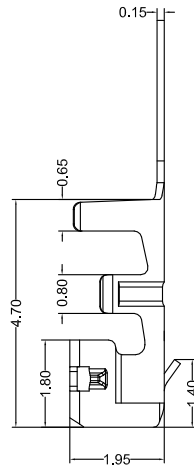
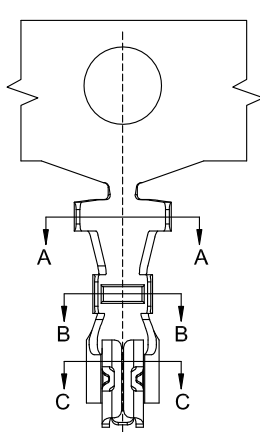
CSG

A2014 51065



A2014HF 0XX AA P6 9 079
 PIN
 005=5PINS
 SPECIAL
 AA=NO Special
 Material
 P6=PA66 94V-0
 Code
 079
 Color
 9=White

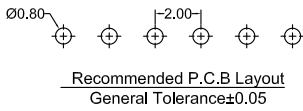
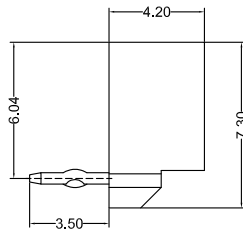
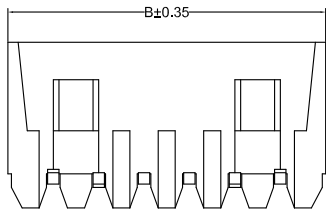
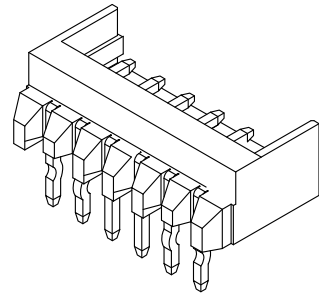
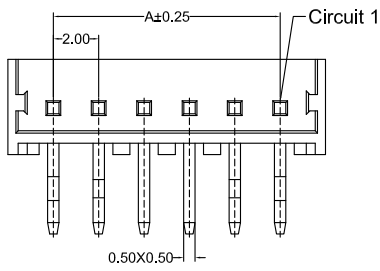
CSG PART NO.	Dimension mm		Qty/BAG
	A	B	
A2014HF002AAP69079	2.00	5.80	1000PCS
A2014HF003AAP69079	4.00	7.80	1000PCS
A2014HF004AAP69079	6.00	9.80	1000PCS
A2014HF005AAP69079	8.00	11.80	1000PCS
A2014HF006AAP69079	10.00	13.80	1000PCS
A2014HF007AAP69079	12.00	15.80	1000PCS
A2014HF008AAP69079	14.00	17.80	1000PCS
A2014HF009AAP69079	16.00	19.80	1000PCS
A2014HF010AAP69079	18.00	21.80	1000PCS
A2014HF011AAP69079	20.00	23.80	1000PCS
A2014HF012AAP69079	22.00	25.80	1000PCS
A2014HF013AAP69079	24.00	27.80	1000PCS
A2014HF014AAP69079	26.00	29.80	1000PCS
A2014HF015AAP69079	28.00	31.80	1000PCS



CSG PART NO.	Wire Range	Insulation O.D.	Qty/Reel
A2006M0ATP002	AWG#24-#26	1.40mm(max)	10000PCS



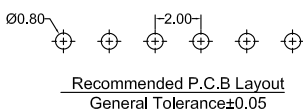
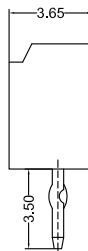
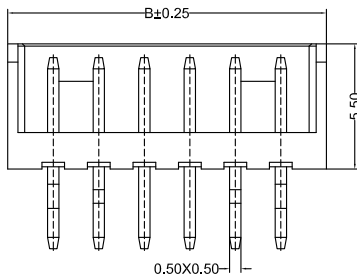
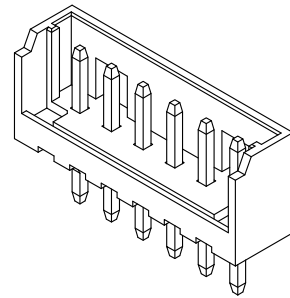
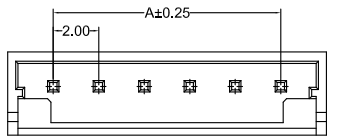
A2014 51065



A2014RD_0XX AA P6 TP C 9 001

- PIN 002=2PINS
- SPECIAL
- AA=NO Special
- Material P6=PA66 94V-0
- Finish TP=Terminal Tin-Plated
- Code 001
- Color 9=White
- Packing C=Bag

CSG PART NO.	Dimension mm		Qty/BAG
	A	B	
A2014RD002AAP6TPC9001	2.00	6.00	1000PCS
A2014RD003AAP6TPC9001	4.00	8.00	1000PCS
A2014RD004AAP6TPC9001	6.00	10.00	1000PCS
A2014RD005AAP6TPC9001	8.00	12.00	1000PCS
A2014RD006AAP6TPC9001	10.00	14.00	1000PCS
A2014RD007AAP6TPC9001	12.00	16.00	1000PCS
A2014RD008AAP6TPC9001	14.00	18.00	1000PCS
A2014RD009AAP6TPC9001	16.00	20.00	1000PCS
A2014RD010AAP6TPC9001	18.00	22.00	1000PCS
A2014RD011AAP6TPC9001	20.00	24.00	1000PCS
A2014RD012AAP6TPC9001	22.00	26.00	1000PCS
A2014RD013AAP6TPC9001	24.00	28.00	1000PCS
A2014RD014AAP6TPC9001	26.00	30.00	1000PCS
A2014RD015AAP6TPC9001	28.00	32.00	1000PCS



A2014VD_0XX AA P6 TP C 9 001

- PIN 002=2PINS
- SPECIAL
- AA=NO Special
- Material P6=PA66 94V-0
- Finish TP=Terminal Tin-Plated
- Code 001
- Color 9=White
- Packing C=Bag

CSG PART NO.	Dimension mm		Qty/BAG
	A	B	
A2014VD002AAP6TPC9001	2.00	6.00	1000PCS
A2014VD003AAP6TPC9001	4.00	8.00	1000PCS
A2014VD004AAP6TPC9001	6.00	10.00	1000PCS
A2014VD005AAP6TPC9001	8.00	12.00	1000PCS
A2014VD006AAP6TPC9001	10.00	14.00	1000PCS
A2014VD007AAP6TPC9001	12.00	16.00	1000PCS
A2014VD008AAP6TPC9001	14.00	18.00	1000PCS
A2014VD009AAP6TPC9001	16.00	20.00	1000PCS
A2014VD010AAP6TPC9001	18.00	22.00	1000PCS
A2014VD011AAP6TPC9001	20.00	24.00	1000PCS
A2014VD012AAP6TPC9001	22.00	26.00	1000PCS
A2014VD013AAP6TPC9001	24.00	28.00	1000PCS
A2014VD014AAP6TPC9001	26.00	30.00	1000PCS
A2014VD015AAP6TPC9001	28.00	32.00	1000PCS

